

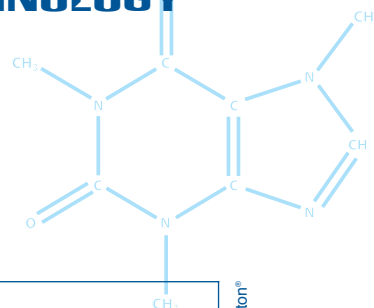
FAST CENTRIFUGAL PARTITION CHROMATOGRAPH[®]

BENCH SCALE FCPC[®] A200

Semi-preparative instrument
for fractionation and purification
of compounds from :

- > **SYNTHETIC CHEMISTRY**
- > **BIOLOGICAL MATRICES**
- > **NATURAL PRODUCTS**
- > **BIOTECHNOLOGY**

NO SOLID SUPPORT
ZERO SAMPLE LOSS
NO EXPENSIVE SILICA REQUIRED
LOW SOLVENT CONSUMPTION
EXTREMELY VERSATILE
AQUEOUS-2-PHASE SYSTEMS AVAILABLE



TECHNICAL SPECIFICATIONS

ROTOR VOLUME	200 ml
INJECTION	Up to 5 gr / run
FLOW-RATE	Up to 15 ml / min
ROTATION SPEED	Up to 1200 rpm
MAXIMUM PRESSURE	900 psi
SEPARATION TIME	20 min to 2h
SECURITY	Automatic door lock, explosion proof motor
ADDITIONALS	4 ways switch valve for normal and reversed elution Cooling system All stainless steel body, interchangeable to 1 liter rotor

Copyright 2007 Kromaton[®]

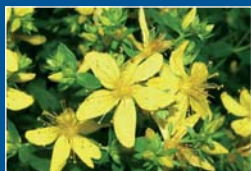


KROMATON

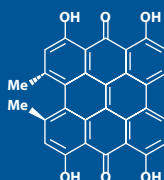
www.kromaton.com

APPLICATION

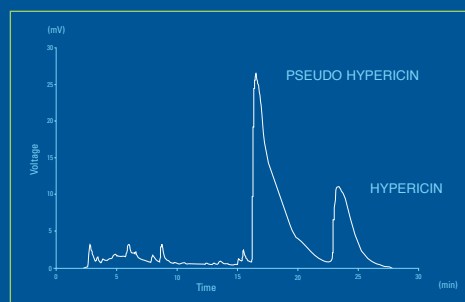
Purification of hypericin from *Hypericum perforatum* crude extract 30%



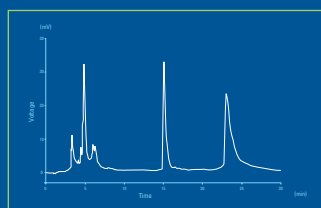
Source : Kromaton R&D Laboratory



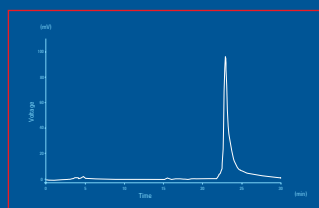
HYPERICIN



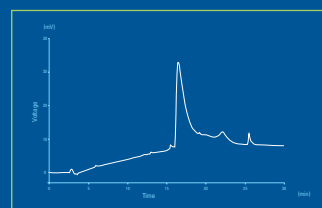
HPLC of crude extract at 270 nm



HPLC of fraction 1 at 270 nm



HPLC of fraction 2 at 270 nm



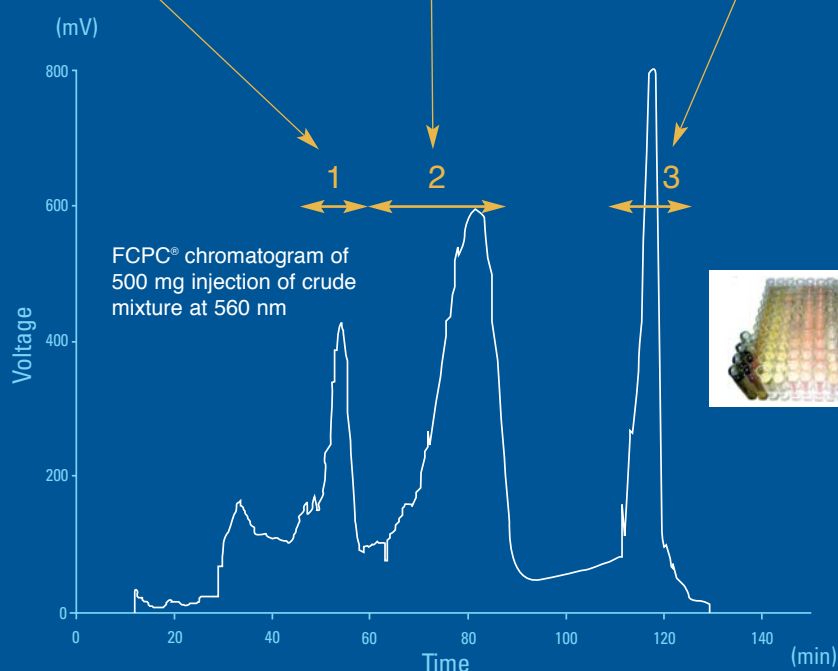
HPLC of fraction 3 at 270 nm



The hypericin present in the flower is a known anti-inflammatory and anti-depressive agent.

PARAMETERS	
FLOW-RATE	8 ml / min
ROTATION SPEED	1200 rpm
QUANTITY INJECTED	500 mg of crude extract
FRACTIONS ANALYSIS	HPLC C18 at 270 nm

RESULTS	
EXPERIMENTAL TIME	130 min
SOLVENT CONSUMPTION	1 liter
HYPERICIN COLLECTED	110 mg at 99%



KROMATON

FRANCE
9, RUE ALEXANDRE FLEMING
49066 ANGERS
PHONE : +33 241 77 41 48
KROMATON@KROMATON.COM

USA
448 IGNACIO BLVD. #480
NOVATO, CA 94949
WWW.KROMATON.COM
KROMATON-USA@KROMATON.COM